

# ELEVATION STANDS & BUFFET RISERS



## Elevation Stands

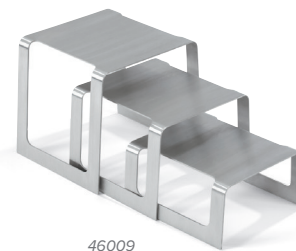
- Durable heavy-duty wire stand with black semi-gloss finish
- Added height makes buffet visually appealing while providing vertical serving space
- Various adaptor plates allow you to use different-sized and -shaped bowls
- Locator tab properly positions adaptor plate for secure fit
- Lifetime warranty on stand welds



ITEM #	DESCRIPTION	RING HEIGHTS: IN (CM)	ACCEPTS BOWLS	DIMENSIONS (L X W X H): IN (CM)	CASE LOT
46540	Staggered-style elevation stand only	5½ (13.97), 7¾ (18.73), 9½ (24.13)	46667, 46591	20¾ x 22¾ x 8¾ (52.7 x 56.8 x 22.1)	1
46541	Ladder-style elevation stand only	3 (7.62), 8¾ (21.9), 13¾ (35.2)	46667, 46591	25½ x 9½ x 13¾ (64.77 x 24.13 x 35.24)	1
46542	ABS adaptor plate – round – medium	—	46666, 46590	7 (17.78) inside diameter	1
46543	ABS adaptor plate – round – small	—	46665, 46587	5½ (13.97) inside diameter	1
46545	ABS adaptor plate – square – large	—	47674, 47634	7¾ (18.73) square cutout	1
46546	ABS adaptor plate – square – medium	—	47672, 47632	6¼ (15.88) square cutout	1
46547	ABS adaptor plate – square – small	—	47659, 47619	5¾ (12.86) square cutout	1

## Square Bent Buffet Riser Sets

- Set of 3 risers to add height and interest to any buffet setup
- For use on tabletops or under tablecloths
- Heavy-duty stainless steel construction
- Patented design



ITEM #	DESCRIPTION	SET INCLUDES	CASE LOT
46009	Set of 3 square bent risers – brushed stainless steel	(1) 8" Riser: 8" x 8" x 8" (20.3 x 20.3 x 20.3 cm), (1) 6" Riser: 8" x 7.5" x 6" (20.3 x 19.1 x 15.2 cm), (1) 4" Riser: 8" x 7" x 4" (20.3 x 17.8 x 10.2 cm)	1
4600915	Set of 3 square bent risers – dazzle red	(1) 8" Riser: 8" x 8" x 8" (20.3 x 20.3 x 20.3 cm), (1) 6" Riser: 8" x 7.5" x 6" (20.3 x 19.1 x 15.2 cm), (1) 4" Riser: 8" x 7" x 4" (20.3 x 17.8 x 10.2 cm)	1
4600960	Set of 3 square bent risers – black black	(1) 8" Riser: 8" x 8" x 8" (20.3 x 20.3 x 20.3 cm), (1) 6" Riser: 8" x 7.5" x 6" (20.3 x 19.1 x 15.2 cm), (1) 4" Riser: 8" x 7" x 4" (20.3 x 17.8 x 10.2 cm)	1
4600950	Set of 3 square bent risers – pearl white	(1) 8" Riser: 8" x 8" x 8" (20.3 x 20.3 x 20.3 cm), (1) 6" Riser: 8" x 7.5" x 6" (20.3 x 19.1 x 15.2 cm), (1) 4" Riser: 8" x 7" x 4" (20.3 x 17.8 x 10.2 cm)	1